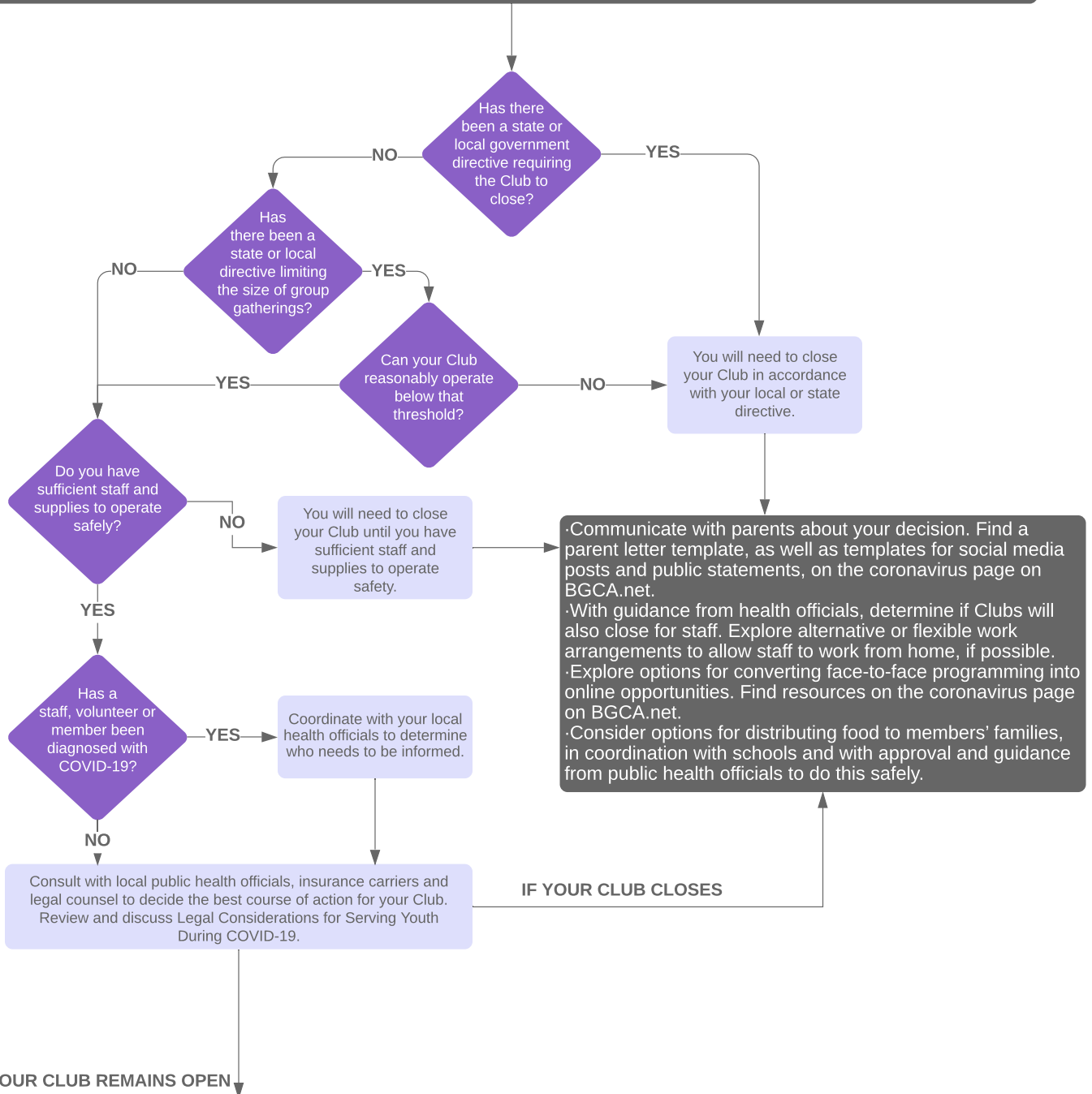


COVID-19 Club Closure Considerations

Across the country, schools have been closed and/or large gatherings have been prohibited in order to stop or slow the further spread of COVID-19 in communities. The decision to close or stay open is a hyper-local decision, depending on many different factors. You can use the chart below to help guide your local discussions. You will need to consult local public health authorities, local or state mandates, your insurance providers, your legal counsel and community partners. Make sure your team understands your decision and the path forward.



IF YOUR CLUB REMAINS OPEN

Review and discuss guidance provided in Legal Considerations for Serving Youth During COVID-19 regarding insurance, potential liability, indemnification, warnings, board liability and adherence to safety guidelines. The board should fully consider and vote to approve this service. Follow CDC's Guidance for Childcare Programs that Remain Open, which includes implementing social distancing strategies, intensifying cleaning, modifying drop off and pick up procedures, maintaining an adequate staff ratio, and wearing face coverings.